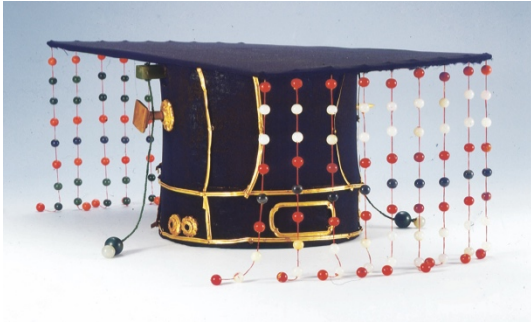


USC Pacific Asia Museum

ROYAL TASTE: THE ART OF PRINCELY COURTS IN 15TH-CENTURY CHINA | February 26–June 26, 2016

We are pleased to provide the following images for publicity relating to the exhibition. To receive digital versions of the images, please contact Nathalia Morales-Evanks at (626) 449-2742 ext. 22 or nathalia.morales@pam.usc.edu



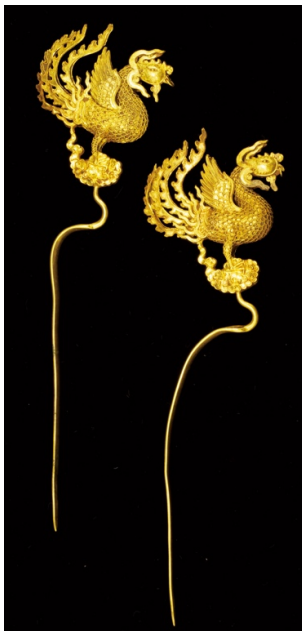
Restored ceremonial nine-tasseled crown

15th century, before 1441

Gold and gemstones, H. 7½ in. (18 cm), L. 19½ in. (49.4 cm)

Excavated from the tomb of Prince Zhuang of Liang, Zhongxiang 2001

Hubei Provincial Museum



Hairpins in pheonix shape

Mid-16th century

Gold, L. 9¾ in. (25cm), W. 2¾ in. (7.1cm), Wt. 146.9 g

Excavated from a royal tomb of the Jing Principality at Wanxuan, Qichun, 2009
Qichun County Museum



Gold ingots with inscriptions

Yongle reign (1403-24), 1416 and 1419

Gold, left: L. 5½ in. (13cm), W. 3¾ in. (9.8cm), D. ¾ in. (1.5 cm), Wt. 1937g; right: L. 5 1/2 in. (14 cm), W. 3¾ in. (10cm), D. ½ in. (1.2cm), Wt. 1874.3g

Excavated from the tomb of Prince Zhuang of Liang, Zhongxiang, 2001

Hubei Provincial Museum



Bracelet & spiral bangle set

15th century, before 1441

Bracelet: gold and gemstones, L. 1 in. (2.6 cm), Diam. 2¼ in. (5.7 cm), Wt 130 g

Bangle: gold, L. 4¾ in. (12.5cm), Diam. 2¾ in. (6.7 cm), Wt, 294 g

Excavated from the tomb of Prince Zhuang of Liang, Zhongxiang, 2001
Hubei Provincial Museum

USC Pacific Asia Museum

ROYAL TASTE: THE ART OF PRINCELY COURTS IN 15TH-CENTURY CHINA | February 26–June 26, 2016

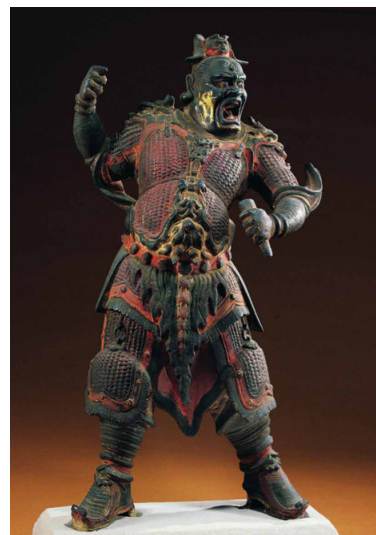
We are pleased to provide the following images for publicity relating to the exhibition. To receive digital versions of the images, please contact Nathalia Morales-Evanks at (626) 449-2742 ext. 22 or nathalia.morales@pam.usc.edu



Plaque of Panjarnātha Mahākāla
15th century, before 1441
Gold, H. 3 ¾ in. (9.4 cm), W. 2 ½ in. (5.4 cm),
Wt 114.1 g
Excavated from the tomb of Prince Zhuang
of Liang, Zhongxiang 2001
Hubei Provincial Museum



Statue of Zhenwu
16th century
Bronze, H. 14 ½ in. (37 cm), W. 10 ½
in. (26.7 cm)
Hubei Provincial Museum



**Statue of Celestial Marshal Gou of
the Thunder Gate**
16th century
Gilt bronze and polychrome, H. 28 ¾
in. (73 cm)
Wudang Museum



Blue-and-white stem cup
Late Xuande reign (1426-35) to early
Zhengtong reign (1436-49), before 1437
Porcelain with underglaze cobalt blue
decoration, H. 4 ½ in. (10.4 cm), Diam.
(mouth) 6 ½ in. (15.6 cm)
Excavated from the tomb of Prince
Zhuang of Liang, Zhongxiang, 2001
Hubei Provincial Museum



Gold ewer
Hongxi reign
Gold, H. 9 ½ in. (24.2cm), Wt 868.4g
Excavated from the tomb of Prince
Zhuang of Liang, Zhongxiang, 2001
Hubei Provincial Museum



**Hat top ornament with jade and
gemstones**
Yuan dynasty, 14th century or earlier
Gold, nephrite, and gemstones, H. 2 ¾ in.
(7cm), Diam. 3 ½ in. (7.8cm), Wt. 114.6 g
Excavated from the tomb of Prince
Zhuang of Liang, Zhongxiang, 2001
Hubei Zhongxiang, 2001